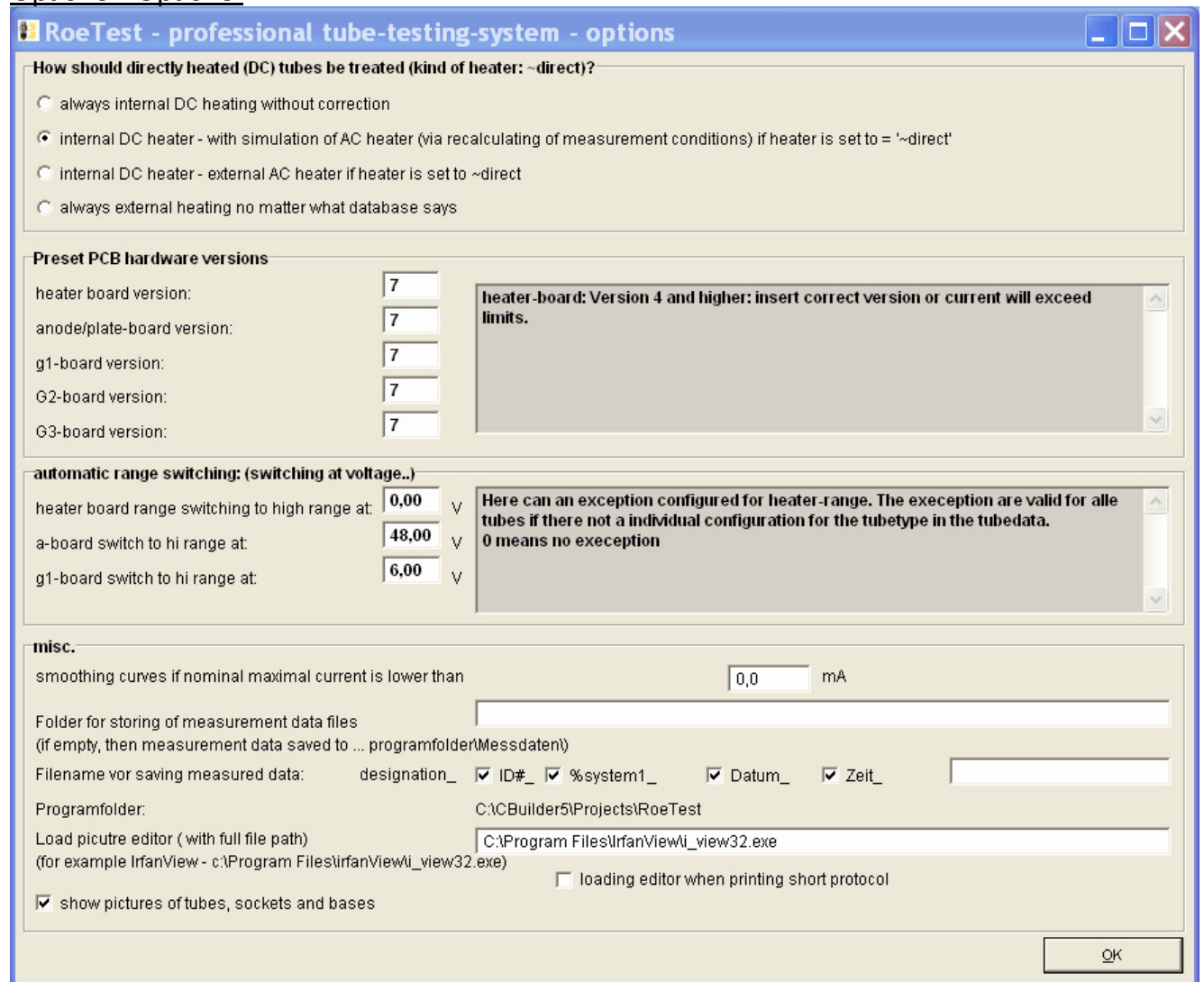


Options - Options:



**“How should directly heated (DC) tubes be treated (kind of heater: - ~direct)?”**

Selects how direct heated tubes shall be treated (type of heating “~direkt”):

**Recommendation as above selected for all RoeTests**

For details see Theizung\_EN.pdf (Tips for heater voltage internal/external)

**“Preset PCB hardware versions:”** (Hardware version selection)

Here the used hardware version of the 5 plug-in boards A, H, G1, G2 and G3 is entered. Mixed operation mode is possible. It is essential to select the correct version number.

**In the picture above the selections for the RoeTest V7 are shown.**

**“automatic range switching: (switching at voltage...)”** (Range switching)

Please read the explanation in the software.

**In the picture above the selections for the RoeTest V7 are shown.**

“**misc:**” (Miscellaneous)

“smoothing curves if nominal maximal current is lower than .. mA.”

When recording characteristic curves with very low currents there may be slight bounces in the curves due to the limited resolution of the RoeTest. This can be corrected by software. Here you can enter the lower threshold where an automatic smoothing of the characteristic curve is performed (the expected nominal current from the static tube data values). If smoothing is not wanted enter 0 here.

**Recommendation:**

**Firmware with Pic up to 4.0: 1,9 (10 bit resolution)**

**Firmware with Pic since 5.2: 0,0 (12 bit resolution)**

“Folder for storing of measurement data files:”

When left empty: Data will be stored to “ ...program directory\Messdaten” (default). If you want to use another directory you have to enter the full path to this directory here. You must have full read and write access rights for this directory.

“File name for saving measured data”

Automatic suggestion of a file name for storing the measured data. The file name always starts with the tube description (type). The further parameters are optional. Available are the ID# of the tube (see identity number), the % value of the first system and a free text field (for example “Telefunken”).

“Program folder:” (Program directory)

Here the location is shown where the RoeTest software is installed – for information only – cannot be changed.

Load picture editor:

May be used when printing short protocols. A picture of the tube may be edited before inserting it. You have to specify the full path to the program if used. I use the free software “IrvanView” (just google for it).

“show pictures of tubes, sockets and bases:”

If marked, then pictures will be shown in the measuring software (in an own window). Socket and holder pictures are included in the software. Tube pictures have to be supplied and stored by yourself. The storage location for the pictures is a sub directory of the measuring software ..\Röhrenbilder\...jpg.